

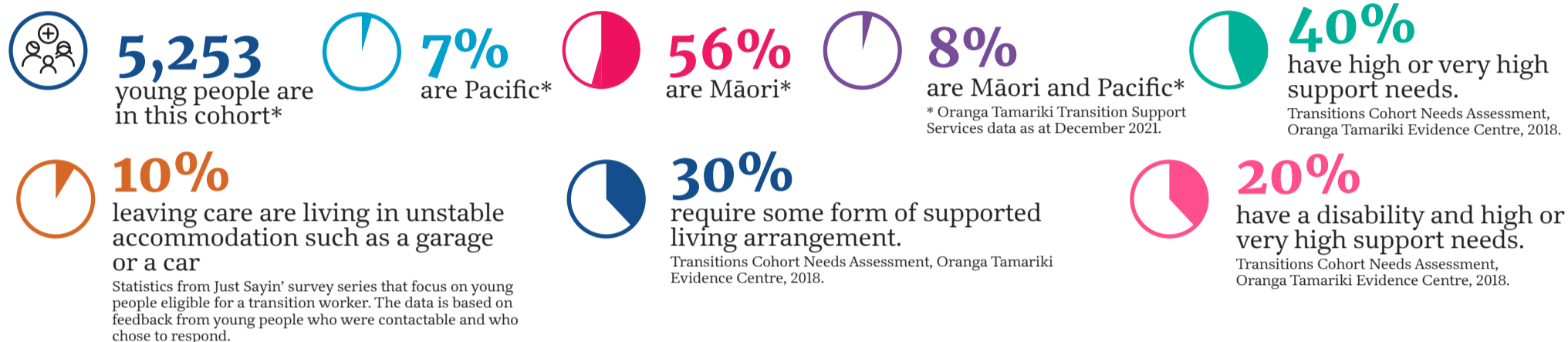
# Prioritising housing services for young people moving to independence from care and youth justice settings

## Focus of this assessment

This assessment examines the housing needs of young people transitioning to independence from care and youth justice settings, with a focus on those who are eligible for the Oranga Tamariki Transition Support Service. This group comprises young people who have been under a care or custody order for a continuous period of three months after the age of 14 years and nine months.

People in this population group have a high risk of experiencing housing deprivation.

They often have multiple, compounding, complex and high needs, as well as fragmented personal support systems.



## Current state

Many young people in this population group rely on the adult housing system to meet their housing needs. Because universal adult services are generally not tailored for them, the services may not address their needs, contributing to housing deprivation.

## Types of services provided by Government housing agencies

Some of the key mechanisms for Government agencies to address housing need for eligible cohorts of the general population include:



## Services provided by Oranga Tamariki

Oranga Tamariki provides this cohort with some tailored housing supports through Transition Support Services. They deliver a mix of services targeted at different parts of the cohort, including:

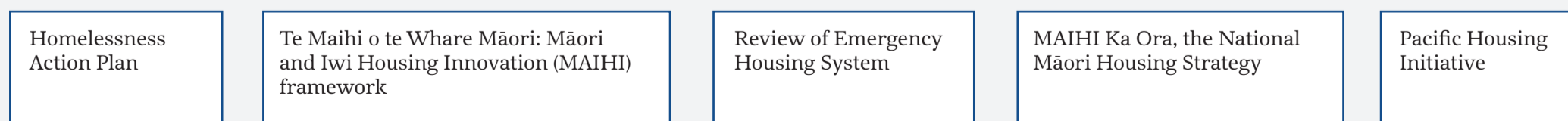
- Preparation and planning for transition
- Supporting young people to remain living with, or return to, a caregiver
- Delivering supported accommodation placements
- Providing advice or financial assistance

**62%** who had left care reported that they had spoken with someone to work out a plan for when they left care  
Statistics from Just Sayin' survey series that focus on young people eligible for a transition worker. The data is based on feedback from young people who were contactable and who chose to respond

**134** current supported accommodation placements delivered by Oranga Tamariki.  
Oranga Tamariki Transition Support Services data

**58** young people were supported by Oranga Tamariki to remain living with, or return to, a caregiver in 2021.  
Oranga Tamariki Transition Support Services data

## Government's current efforts to improve housing services



## System gaps

System failures have contributed to over-representation of rangatahi Māori in housing deprivation measures, and disconnection from whānau, hapū, and iwi

## Driving change

### Supporting rangatahi Māori to return to whānau, hapū, or iwi

Oranga Tamariki will increase the number of Transition hui-a-whānau or Family Group Conferences to ensure whānau involvement in transition planning processes

### Supported housing

- Shortage of placements for this cohort
- Longer term uncertainty for Oranga Tamariki supported accommodation service
- Variable options across the country

### Ensuring supported accommodation is fit for purpose

HUD is establishing a new supported service of up to 65 places for young people with higher, more complex needs over four years beginning in mid-2023 and delivering 80-90 additional youth-focused transitional places over four years beginning late 2022.

Oranga Tamariki will provide Ministers with separate advice for ensuring a fit for purpose supported accommodation service is delivered to young people moving to independence from care and youth justice settings.

### Young parent homes

- Shortage of placements
- Challenges connecting young parents to longer term housing
- Current model sometimes disconnects young parents from their family, whānau, and community

### Reviewing the current model of young parent homes to ensure young parents have their housing needs met

As part of the policy work on supported accommodation, Oranga Tamariki will review the current model of young parents homes to identify areas for change, ensuring young parents have their housing needs met.

### Emergency housing

- Cohort faces challenges accessing emergency housing
- Emergency housing is sometimes inappropriate and unsafe for this cohort
- People are staying in emergency accommodation for longer than is appropriate

### Ensuring safe and suitable emergency housing where longer term housing is not available

Oranga Tamariki will continue to work with HUD and MSD to ensure that the specific needs of young people moving to independence from care and youth justice settings are considered through the Emergency Housing System Review. This will incorporate the perspectives of frontline staff.

### Remaining with or returning to a caregiver

- Uptake of Oranga Tamariki entitlement to remain with or return to a caregiver is lower than anticipated (approximately 6 percent of eligible young people in 2021)

### Increasing the uptake of eligible young people's entitlement to remain with or return to a caregiver

Oranga Tamariki will ensure more eligible young people are aware of their entitlement, and caregivers are aware they can be supported to maintain the relationship for longer. This includes new collateral to increase understanding by frontline staff and caregivers, as well as training for caregiver social workers.



Child and Youth  
Wellbeing



ORANGA  
TAMARIKI  
Ministry for Children